



# Pronto Intelligent Access Point

## Quick Start Guide



PIAP-11N-M2S-SW

---

## Package Contents

Unbox and verify the following contents:

- Pronto Intelligent Access Point
  - Ceiling and Wall Mounting Kit
- 

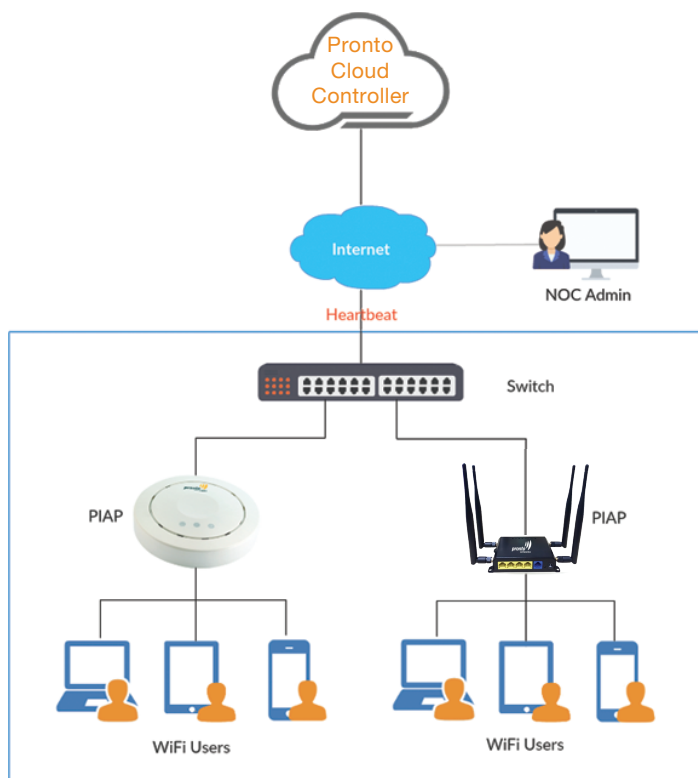
## Hardware Installation

- Connect one end of Ethernet cable to switch port and the other end to Pronto Intelligent AP's WAN port and power on the AP
- Ensure that the Ethernet LED is on (LED will glow in orange)

**Zero-Touch Provisioning:** The Pronto Intelligent Access Points are automatically configured and provisioned in the Pronto Cloud Controller with default configuration. By default, the AP WAN Port would be set for DHCP connection type. Administrator can change the default configuration and enable monitoring by registering or login to the Pronto Cloud Controller.

---

## Network Architecture



## Configuration

- Open a browser and type the following URL **http://cloud.prontonetworks.com**
- Pronto Cloud Controller welcome page appears and click on 'Sign up' to create an account.
- Provide data in the respective field to create a user account and click on 'Sign up'.
- On successful registration of user details, a confirmation instruction email will be sent to the given email address, (if the email isn't found in the Inbox, please check spam).
- Provide the user credentials and click on 'Sign in'.
- Upon successful login to the user account, the Pronto Cloud Controller Welcome page appears.
- Click on '**Create a new network**' link on the welcome text or click on 'Select Network' drop down and select '**Create Network**'. Provide Network Name, Provide MAC address of access point under Device(s) and click on '**Create Network**' Button.

Create Network

Network Name

Pronto Network

Configuration

Default Configuration

Clone Configuration

Test

Network Timezone

(GMT-08:00) Pacific Time (US & Canada)

Device(s)

00:0C:66:11:22:33 Press Enter or Tab for adding Devices

Add one or multiple devices to claim and assign to this network.

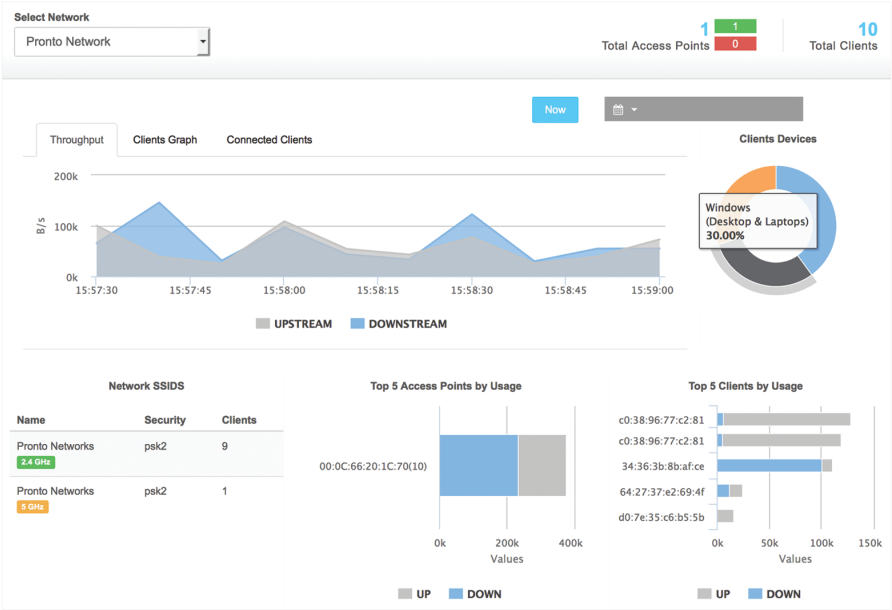
Create Network

Cancel

- Bulk provisioning of AP's is also available under the Inventories section.
- Upon successful creation of network, an SSID for the network will be generated automatically with the name of network with wireless word added to it. The automatically generated SSID will have a default configuration and can be edited by clicking on the SSID name. To create a New SSID, click on '**Add SSID**' button.

Network SSIDs										+ Add SSID
10 records per page										Search:
Name	Enabled	Association	Band	Mode	Hidden	Captive Portal	VLAN tag	Network / AP / AP tags	Actions	
Pronto Network Wireless	YES	psk2	2.4 GHz	Router	No	Disabled	N/A		<a href="#">Edit</a>	
Showing 1 to 1 of 1 entries										Previous 1 Next

- You can start monitoring the access points from the Dashboard. It provides real time and historical graphical representation of Network throughput and throughput of connected clients in the respective network. The network can be switched using the ‘Select Network’ drop down.



## Sales Contact

### North America:

Pronto Networks, 1966 Tice Valley Blvd, #411, Walnut Creek, CA 94595, USA.  
Tel: +1 888 997 4223, Fax: +1 267 873 8803

### EMEA:

Email: sales-emea@prontonetworks.com

### Asia Pacific:

Tel: +91-80-44469400 / + 91-11-45701314  
Email: sales-apac@prontonetworks.com