

Manual of PP18 (450Mbps 5.8G Outdoor CPE)



This is the manual of 450Mbps 5.8G outdoor CPE, which will approximate guide you how to set and apply the outdoor CPE, it provide a convenient graphical interface for network construction and maintenance person, as well as a user through a simple and accurate operation, and configuration management of the CPE.

I. Connection and Power Supply

I. Port Connection and power supply

Instruction of different port:



P1. CPE Port Connection

Please use a power supply of 12V DC adapter or 24V POE adapter, WAN / LAN port is the PoE Port.



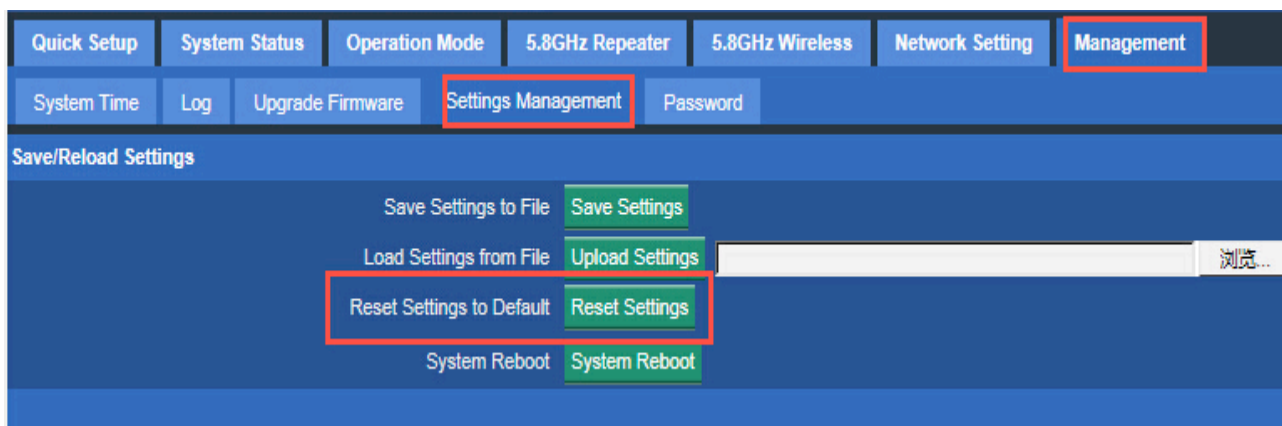
Pay Attention

Pls make sure the CPE's power supply is normal, or the CPE will be damaged and can't reboot

Reset:

There are two ways to reset the CPE:

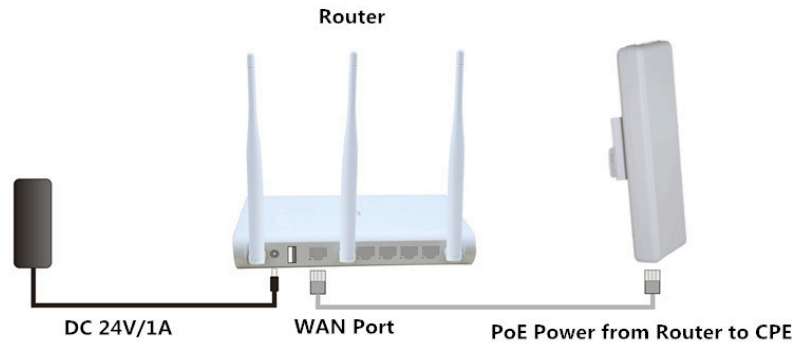
1. CPE Manage page: Click "Management", then "Save/Reload Settings", then click "Reset Settings" to finish the CPE Reset.



P2. CPE Reset

2. Press the Reset Button on CPE more than 15 seconds, then release, the device will reboot and restore to factory settings

The connection way of CPE, PoE Router:



P3. Connection diagram of CPE and PoE Router



Pay Attention

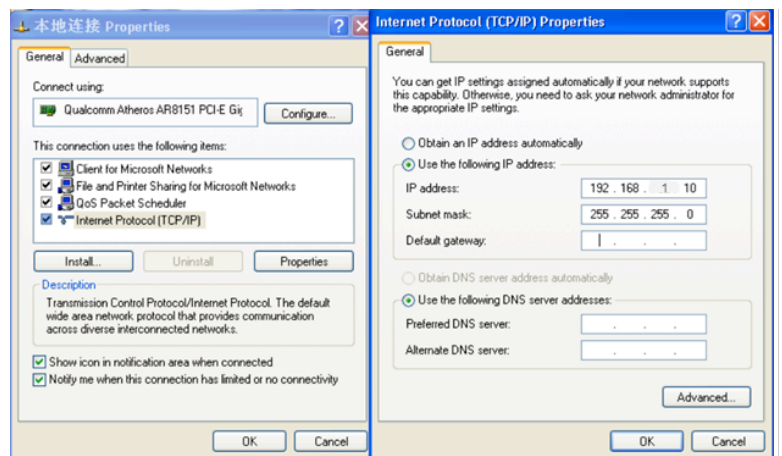
Incorrect Connection or the use power adapter and PoE adapter not from our factory, the CPE will be damaged

II. Login

1. Connect the CPE with computer as P2 picture
2. Configure the PC's local connection IP address as 192.168.1.X (X is number from 2 to 254), subnet mask is 255.255.255.0, follow P4 and P5 to finish.



P4. Setting of computer's IP addresses



P5. Setting of computer's IP address

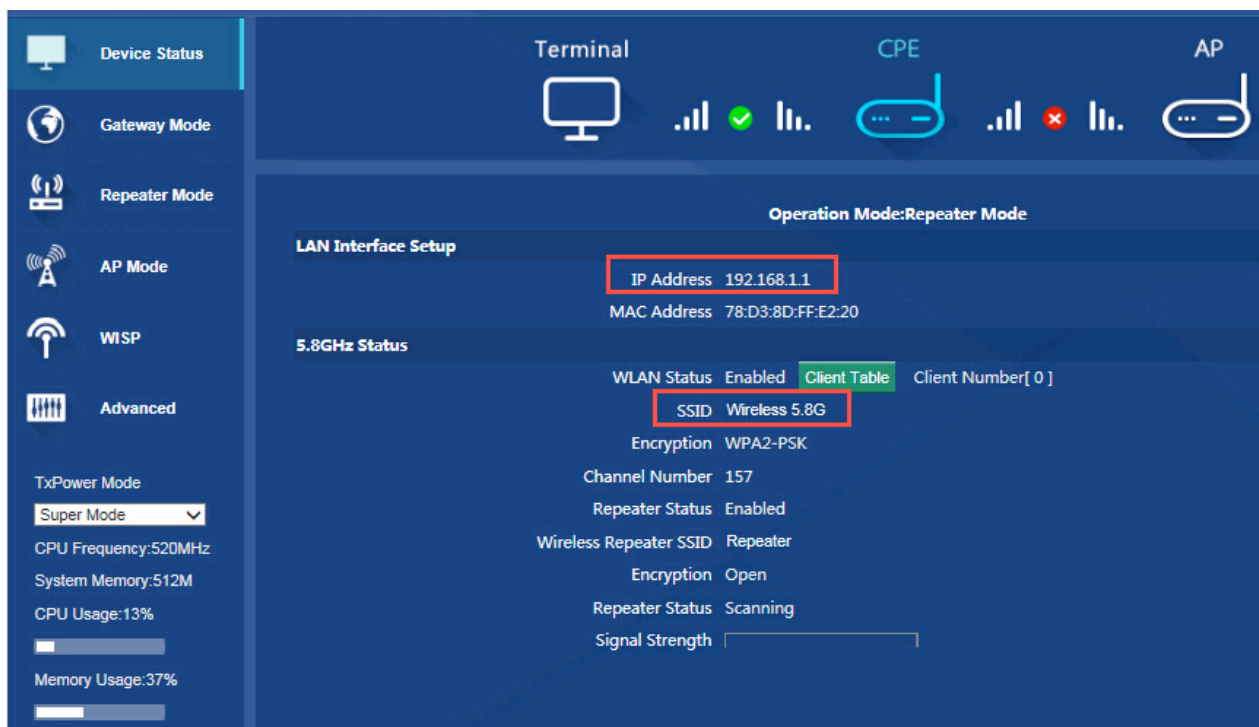


3. Input 192.168.1.1 into IE browser, then pop up the login page, the default login user name: Admin, Passwords: pronto, please do following P5



P6. Login

After login, then P6 Device Status will be showed:



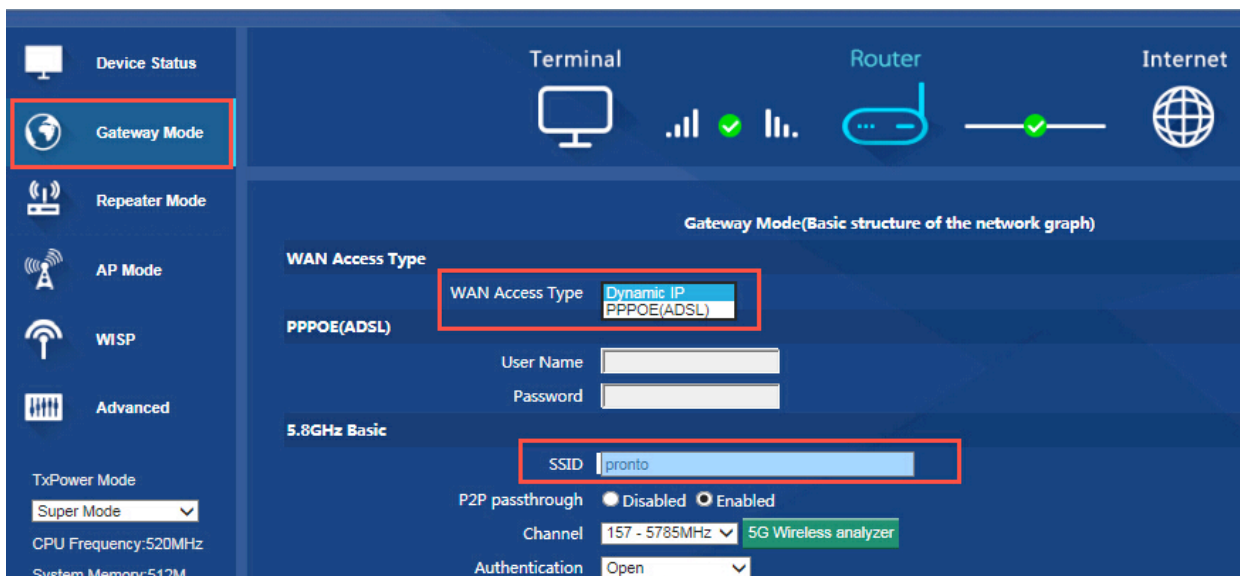
P7. Device Status

There are four operation mode showed on this page:
Gateway mode, Repeater Mode, AP Mode and WISP Mode;
And the default operation mode is Wireless AP.

III. Quickly Configure CPE

Gateway Mode:

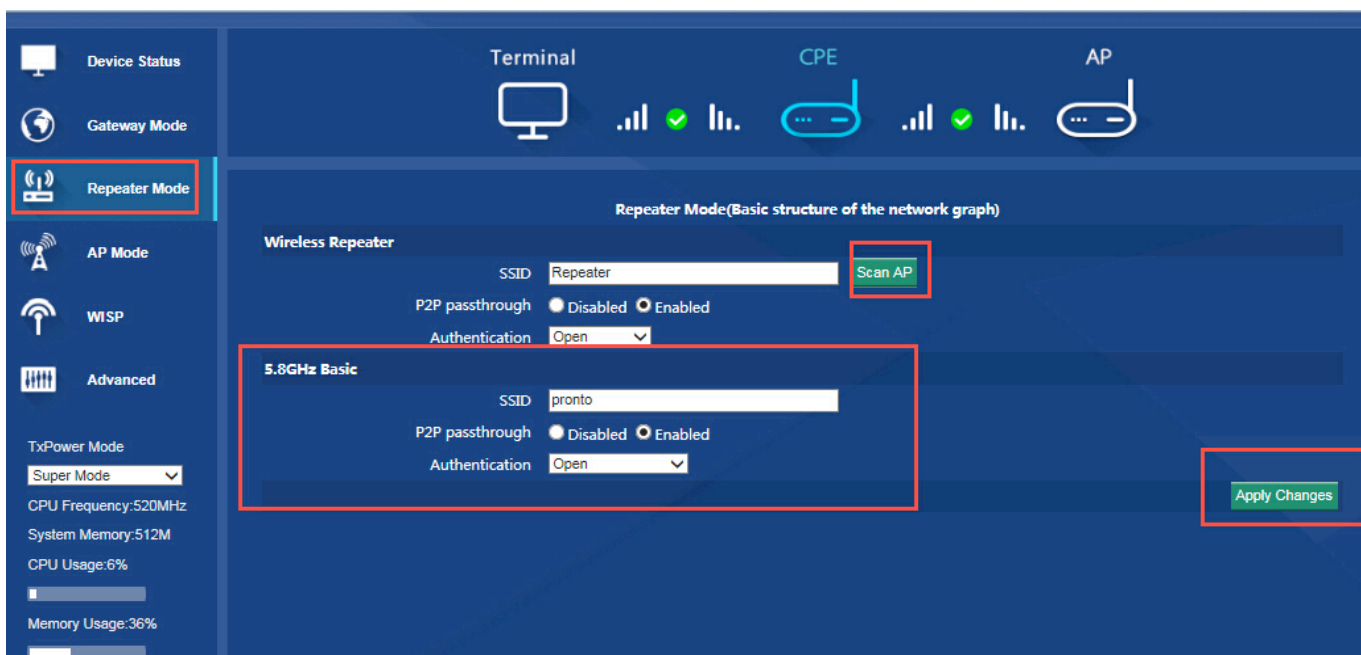
Click "Gateway Mode" under following picture and choose the right WAN access type, then input the right SSID, Channel, key as like.



P8. Gateway Mode

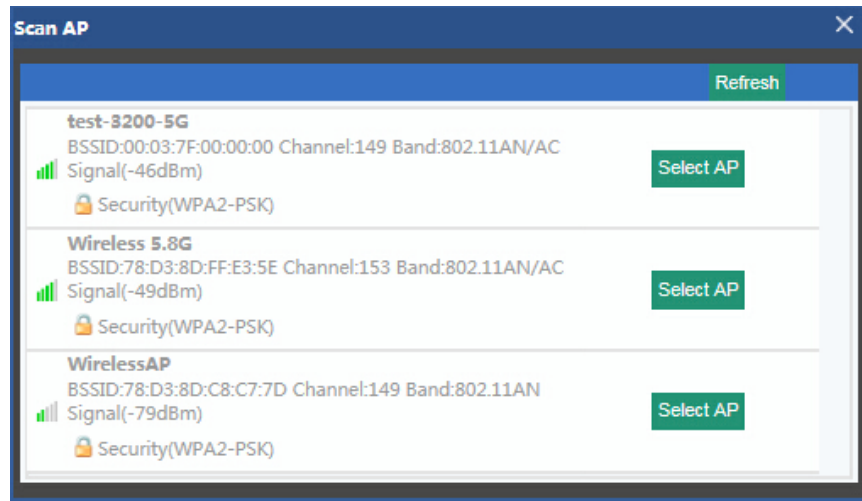
WiFi Repeater and Station operation configuration

Login the Web management page, click "Repeater Mode", then "Scan AP"



P9. Repeater Mode

Select the AP's SSID want to bridge, take test-3200-5G for example, Select AP

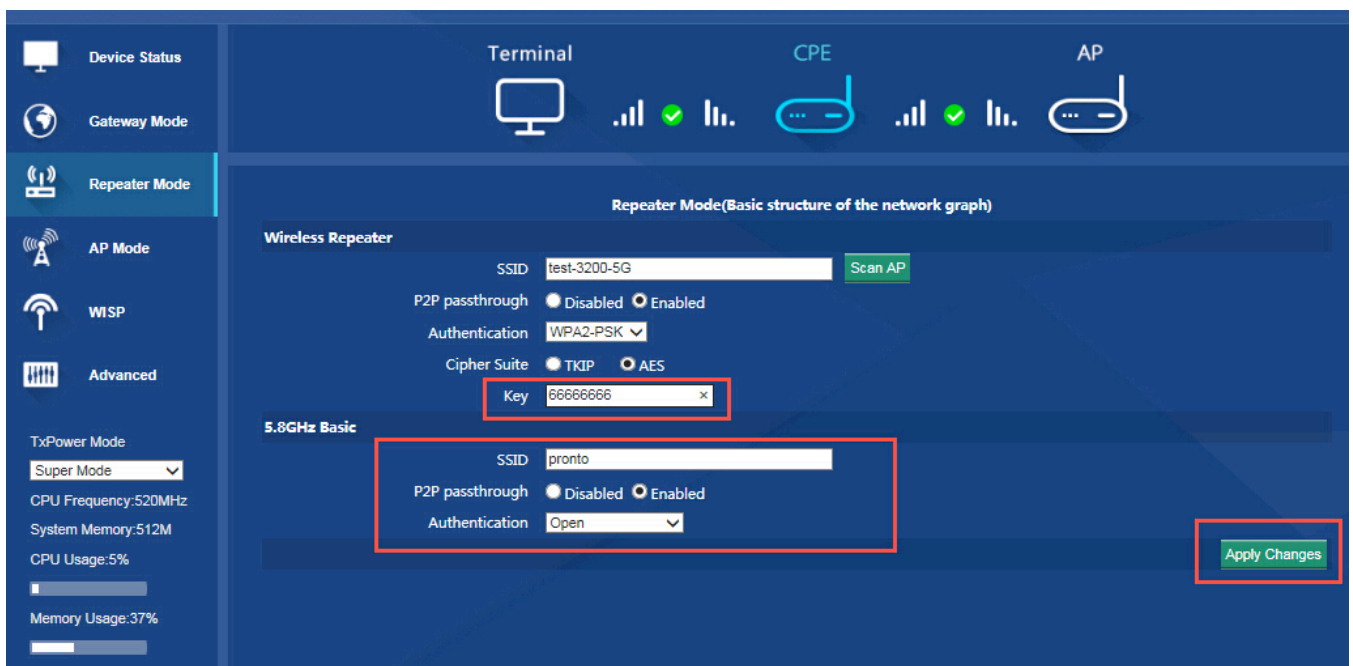


P10. Select AP



If your computer can't pop up this window, pls check your IE explorer and see whether it is blocked already. And if this CPE can't scan any SSID, pls check if there are 5G wireless signal.

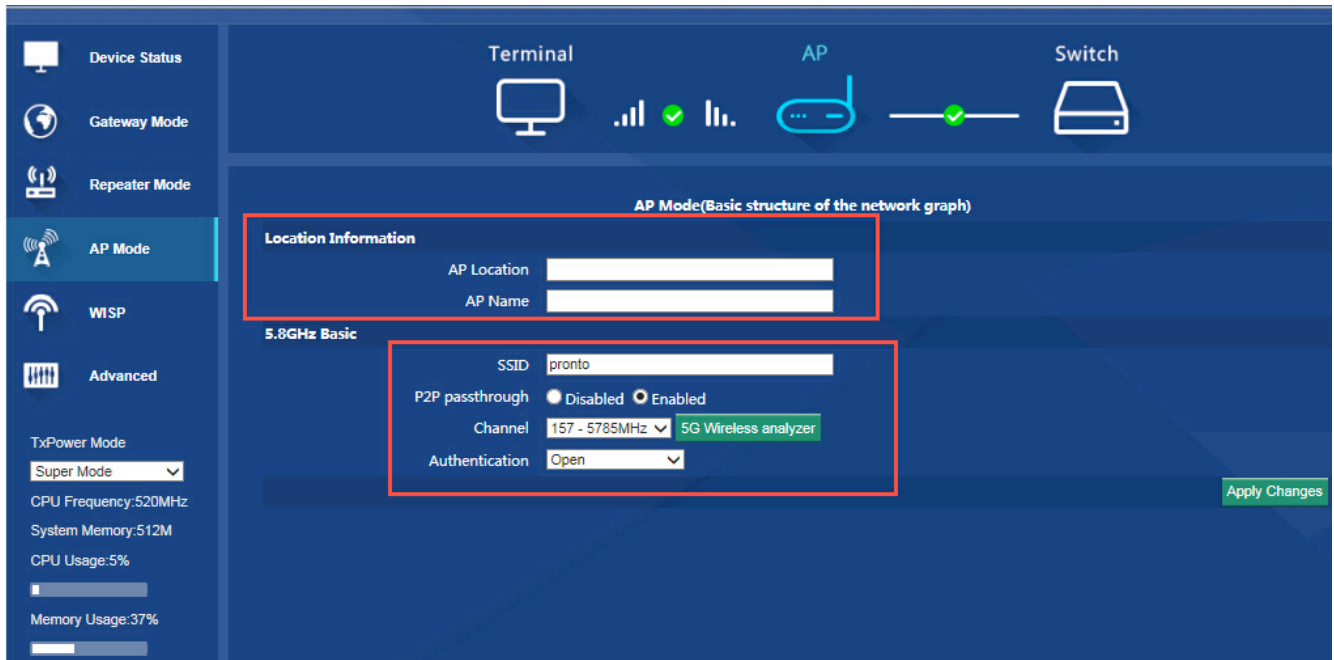
Input the AP's key, and apply changes, then the outdoor CPE in WiFi repeater.



P11. Repeater Mode

AP Mode

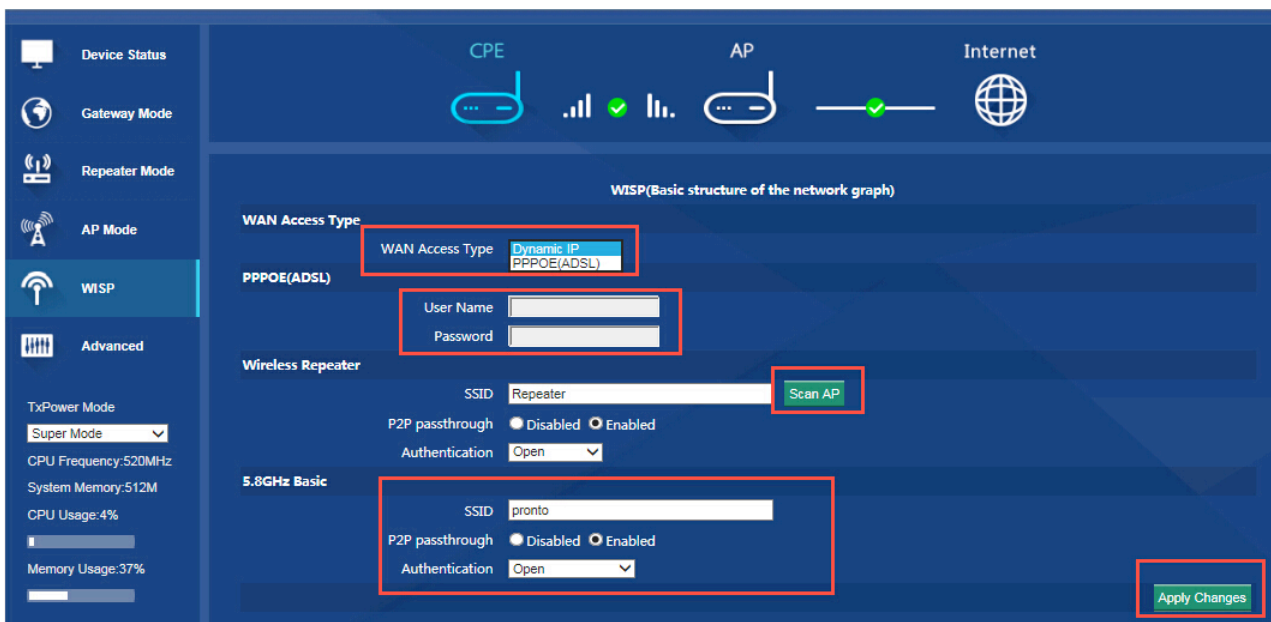
Plug and Play to transmit wireless signal for wireless end users form wired networking. In this part, user can mark the AP's location and name for easy problem checking. Then can change SSID, Key, Channel as request.



P12. AP Mode

WISP

In this operation mode, user should confirm the WAN access type at first, then set the SSID, key, Channel as request.



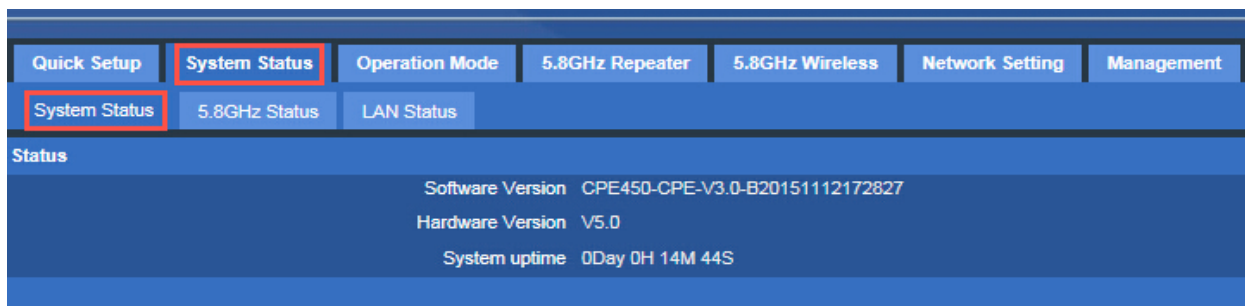
P13. WIPS Mode



Advanced Settings:

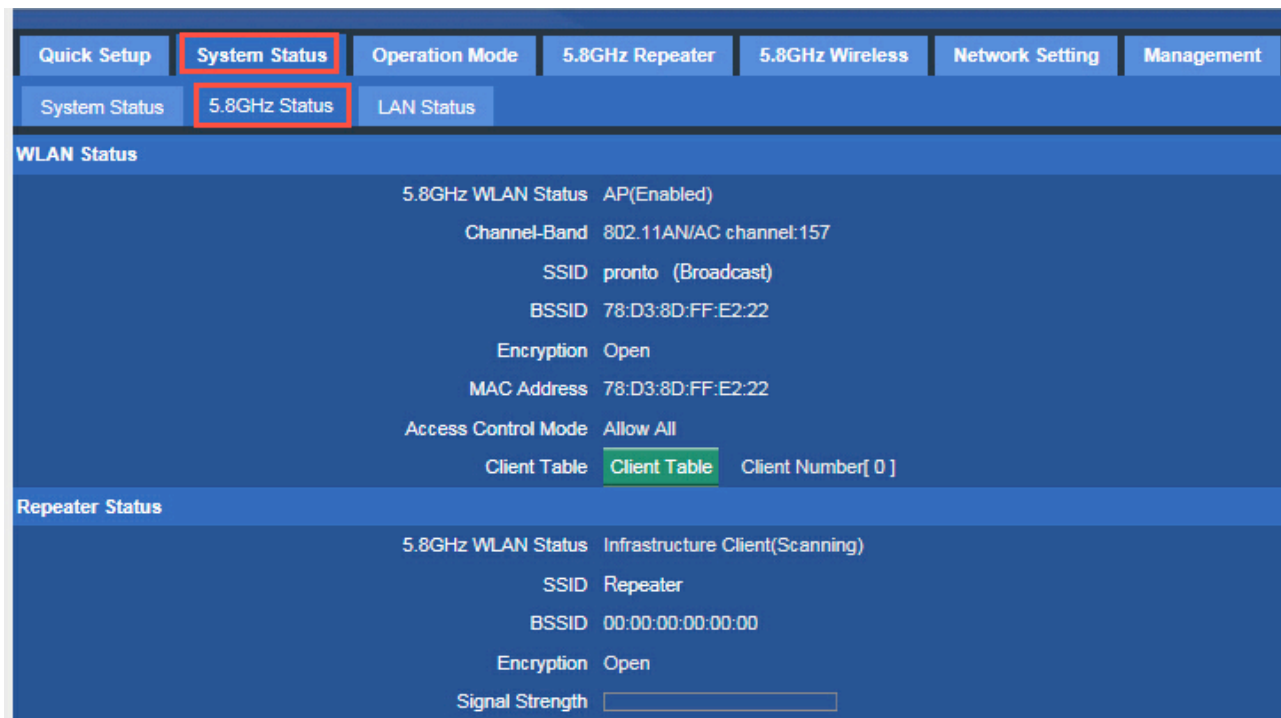
I. System Status

Click "Advance Settings", will show system status, such as firmware version, build time, System uptime...



P14. System Status

Click 5.8GHz Wireless Status, will show CPE's WLAN Status, Signal Strength, SSID...



P15. 5.8GHz Wireless Status

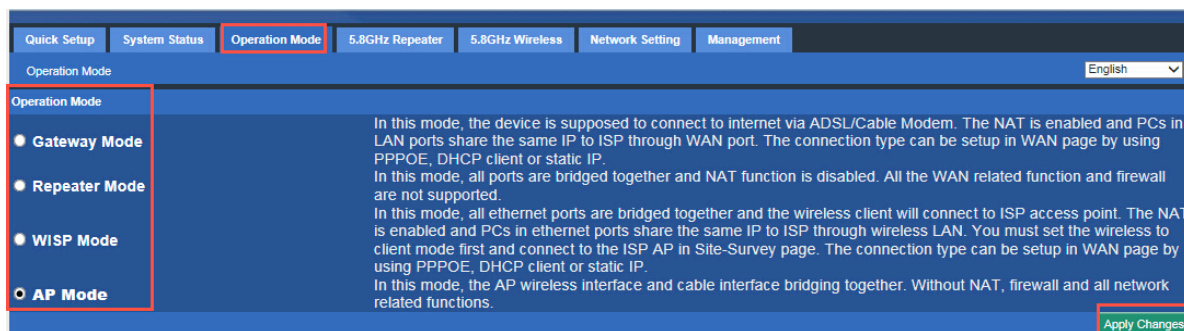
If want to check LAN status, please check following picture



P16. LAN Status

II. Operation Mode:

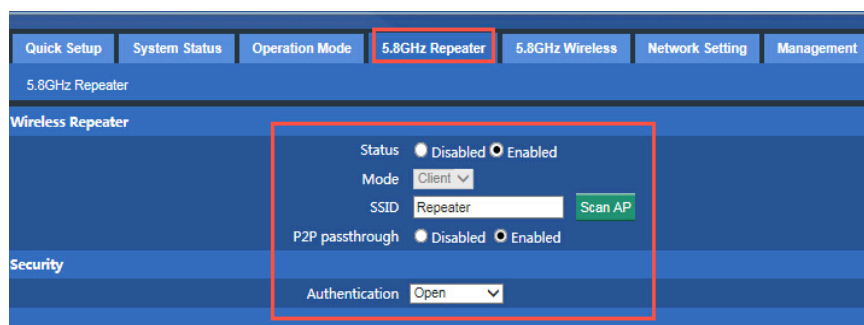
Set operation mode manually, choose the right operation mode, then apply changes. The function of this part will be same as Quick Setup step.



P17. Operation Mode

III. 5.8GHz Repeater:

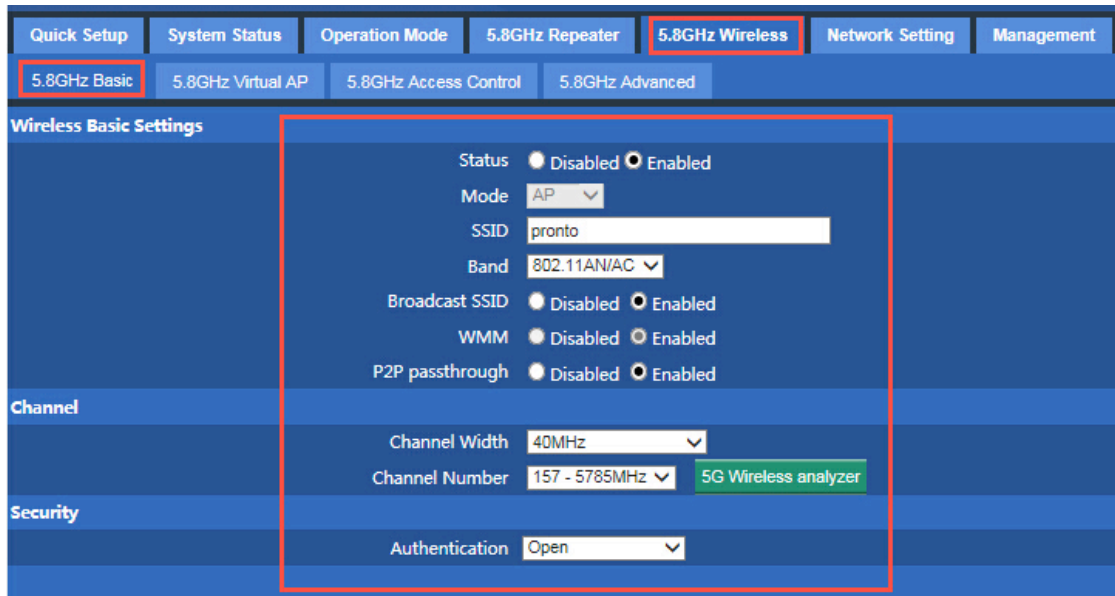
In this part, main function is WiFi repeater, bridge exist wireless AP, then set security as you like.



P18. 5.8G Repeater

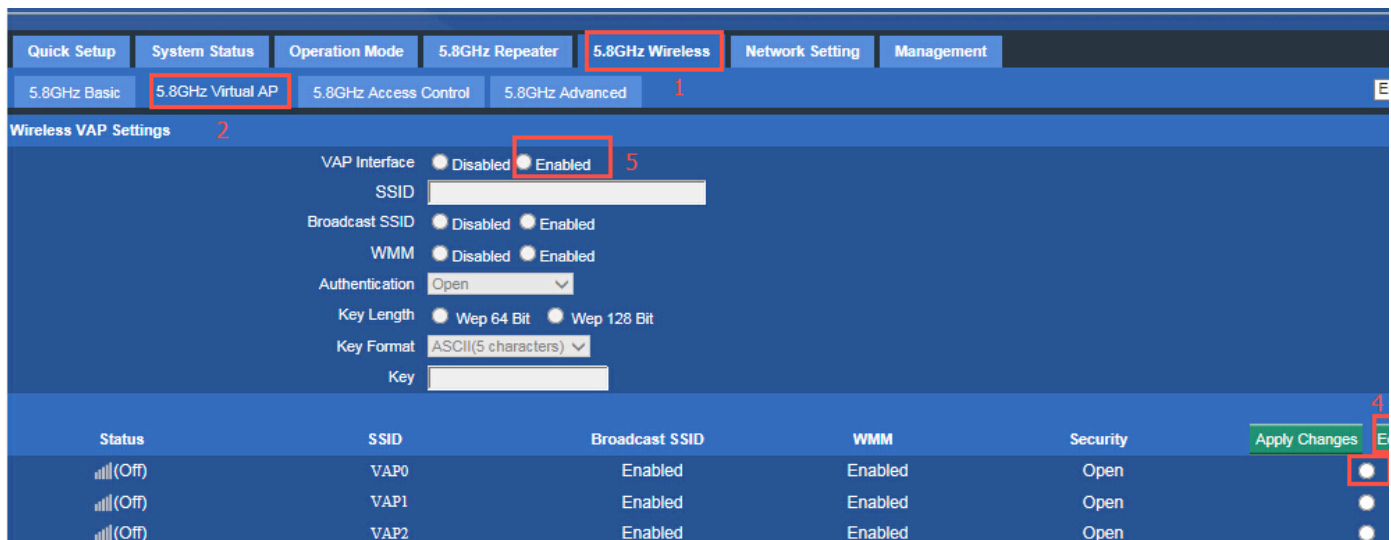
IV. 5.8G Wireless:

In this part, users can managed the CPE's SSID, password, channel, bandwidth, security method, firewall, virtual AP.....



P19. 5.8GHz Basic info

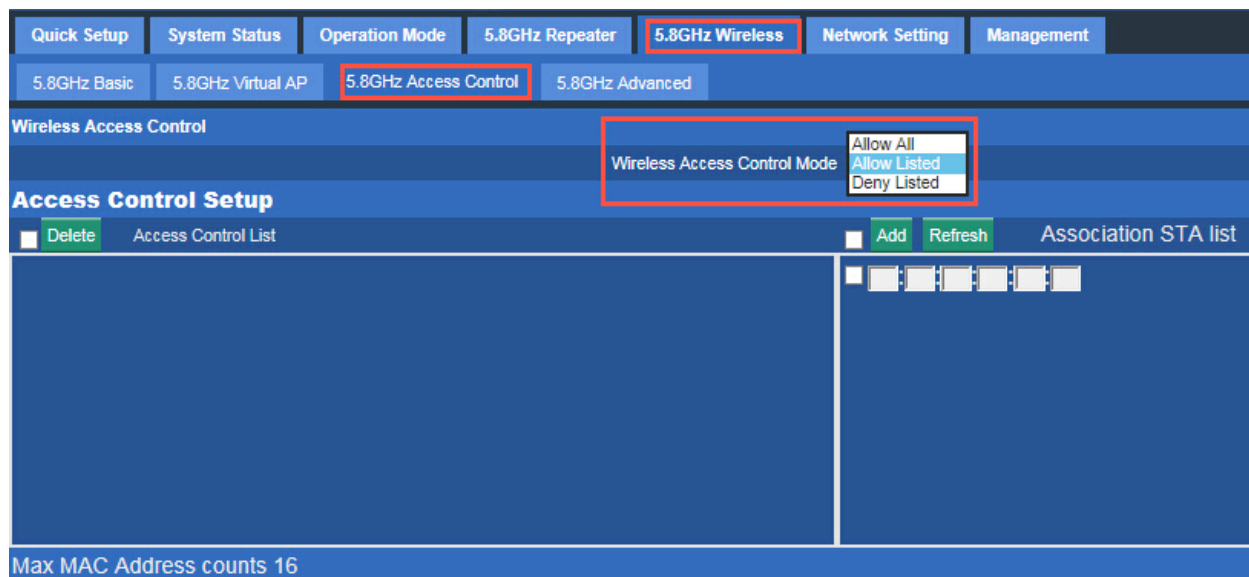
How to set 5.8G Virtual AP, please take 1,2,3,4,5 steps



Status	SSID	Broadcast SSID	WMM	Security
Signal (Off)	VAP0	Enabled	Enabled	Open
Signal (Off)	VAP1	Enabled	Enabled	Open
Signal (Off)	VAP2	Enabled	Enabled	Open

P20. 5.8GHz Virtual AP

How to allow/deny the end user list to access into this CPE.



Quick Setup System Status Operation Mode 5.8GHz Repeater **5.8GHz Wireless** Network Setting Management

5.8GHz Basic 5.8GHz Virtual AP **5.8GHz Access Control** 5.8GHz Advanced

Wireless Access Control

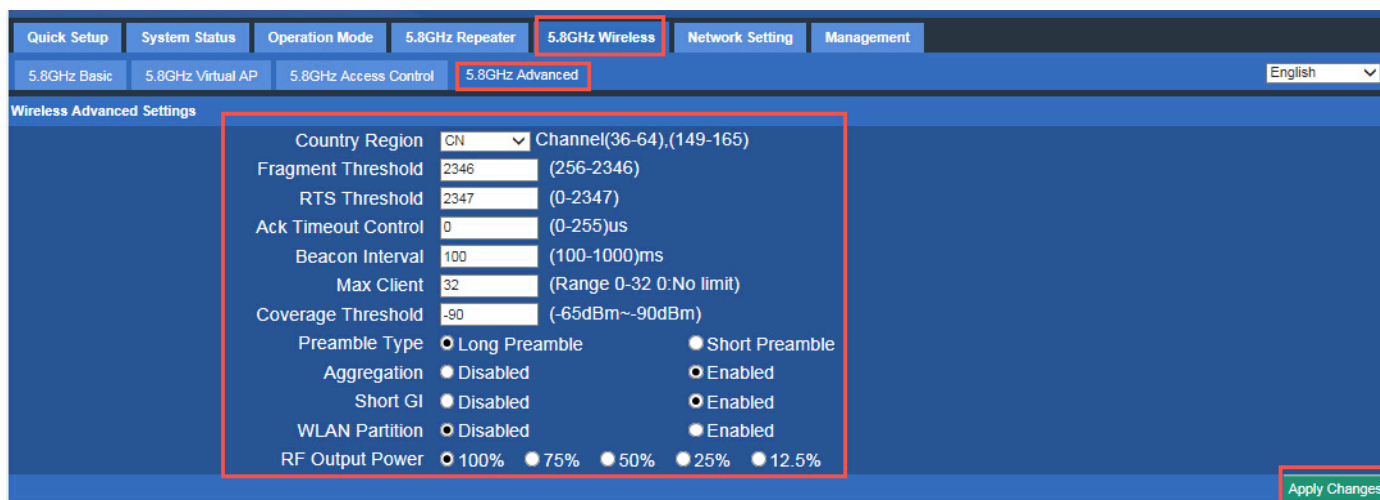
Wireless Access Control Mode: Allow All, Allow Listed, Deny Listed

Access Control Setup

Delete Access Control List Add Refresh Association STA list

Max MAC Address counts 16

P21. 5.8GHz Access Control



Quick Setup System Status Operation Mode 5.8GHz Repeater **5.8GHz Wireless** Network Setting Management

5.8GHz Basic 5.8GHz Virtual AP 5.8GHz Access Control **5.8GHz Advanced** English

Wireless Advanced Settings

Country Region: CN Channel(36-64),(149-165)

Fragment Threshold: 2346 (256-2346)

RTS Threshold: 2347 (0-2347)

Ack Timeout Control: 0 (0-255)us

Beacon Interval: 100 (100-1000)ms

Max Client: 32 (Range 0-32 0:No limit)

Coverage Threshold: -90 (-65dBm~-90dBm)

Preamble Type: Long Preamble Short Preamble

Aggregation: Disabled Enabled

Short GI: Disabled Enabled

WLAN Partition: Disabled Enabled

RF Output Power: 100% 75% 50% 25% 12.5%

Apply Changes

P22. 5.8GHz Advanced

IV. Network Setting

LAN Interface Setup mainly showed as follow:



Quick Setup System Status Operation Mode 5.8GHz Repeater 5.8GHz Wireless **Network Setting** Management

LAN Interface English

LAN Interface Setup

IP Address: 192 . 168 . 1 . 1

Subnet Mask: 255 . 255 . 255 . 0

DHCP Server: Disabled Enabled

DHCP Client Range: 192 . 168 . 1 . 1 - 192 . 168 . 1 . 254

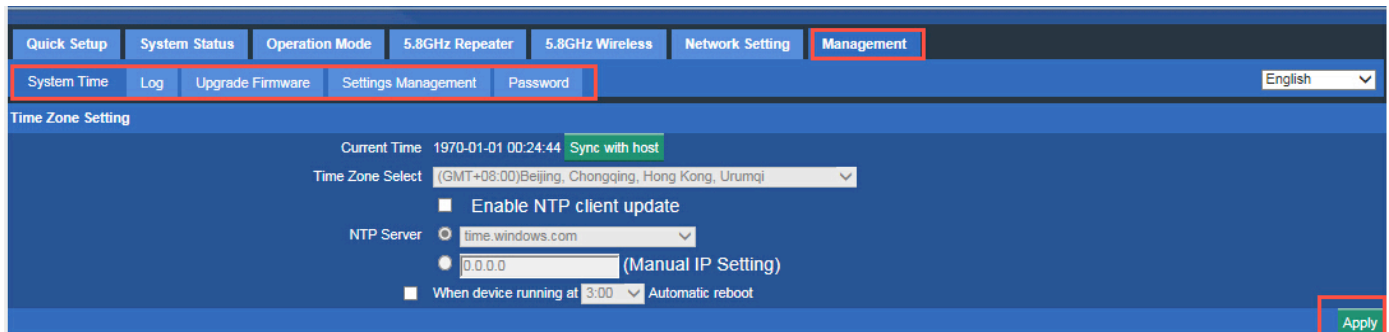
Lease Time(sec): 86400 (300-86400)

Apply Changes

P23. Network Setting

V. Management

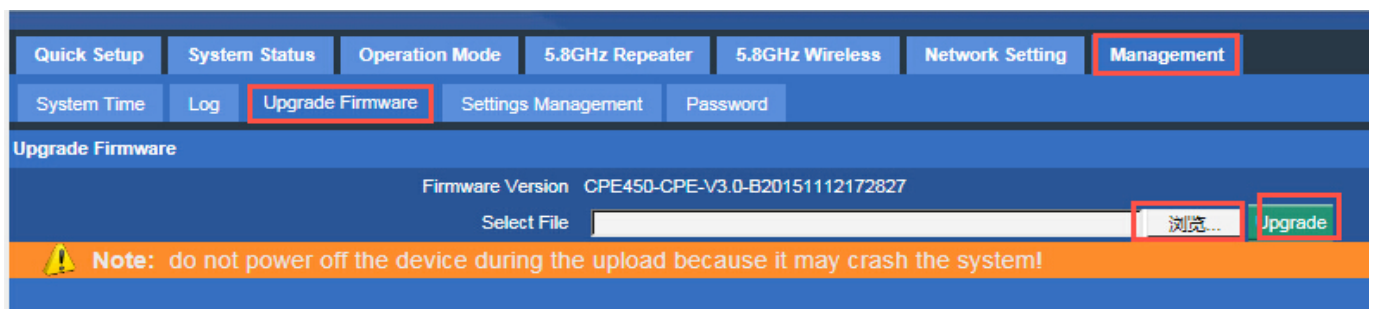
In this part, user can set Time zone, show Log info, upgrade firmware, change login user name and password.



P25. Management

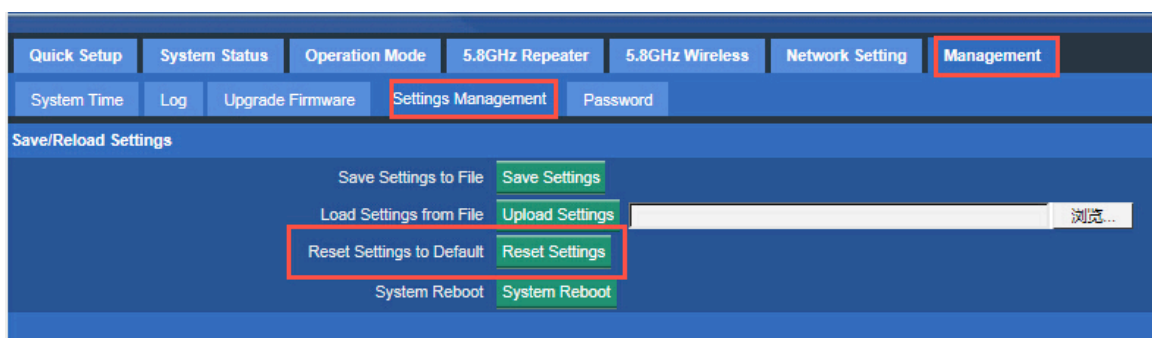
VI. Upgrade Firmware

Pls click Upgrade Firmware, then browse and choose the firmware should upgrade, then click upgrade to upgrade the firmware.



P26. Firmware Upgrade

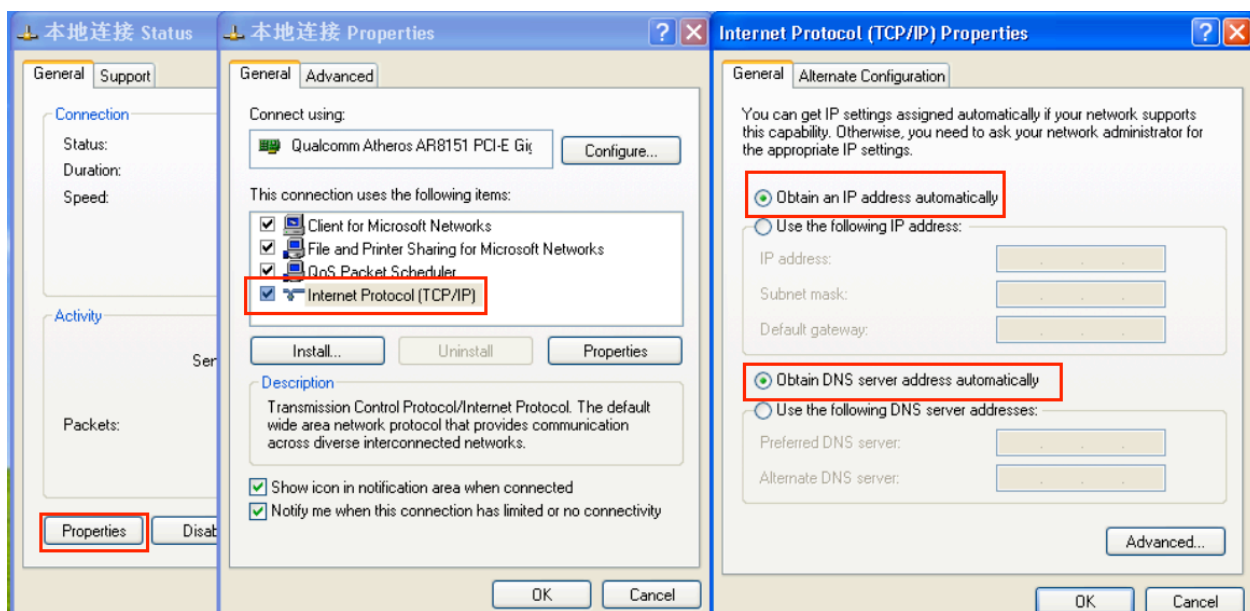
After finish firmware upgrade, please click Save/Reload Settings, then reset settings to default.



After that, the firmware upgrade is finished.

VII. Share Internet and Obtain IP address automatically

Set computer's TCP/IP as [Obtain an IP address automatically](#), [Obtain DNS server address automatically](#) as following picture showed. The computer will obtain the IP address from router or base station to get Internet.



Trouble Shooting:

F1: The Failure phenomenon and solution

Failure phenomenon	Solution
SYS Indicator off	Please make sure the PoE module connection is right. POE Port connect with CPE, LAN port connect with computer
Can't scan the wireless AP	Scan it several times more; Make sure there are 5G signal existed. Reset the CPE, scan it again after CPE restart;

Failure phenomenon	Solution
Can't land to CPE through Web page	<p>Please check the IP address of computer and CPE to see whether they are in same networking segment, The method is click "start"->"Run" input "cmd", ping 192.168.1.1 to test the CPE connectivity.</p> <p>Reset CPE and load it again;</p> <p>Please make sure the IP address 192.168.1.1 is not occupied by other device in CPE's networking;</p> <p>Check computer and cable problem, recommend to use 10/100M UTP unshielded cable;</p> <p>Clean up Arp binding from "Start"->"Run" input "cmd" arp -d</p> <p>Clean the IE Brower's temporary files and Cache file.</p>
CPE can't connect with AP (the status display unconnected)	<p>Try to scan the available wireless networking again;</p> <p>Make sure the CPE's wireless standard (11b/g/n, 5.8G) is correct;</p> <p>The Security and passwords are matched between CPE and AP;</p> <p>The signal strength of AP is too weak to connect, should be more than -75dBm;</p>
The connection of CPE and AP is success, but the computer can't share internet	<p>Please Check the computer's IP address and DNS setting. If it is dynamain, set the network card as automatically obtain. If it is static IP, Please contact with ISP for correct IP address and DNS address.</p>
How to Reset CPE	<p>Press the "Reset" button more than 15 seconds after power on. The CPE will restore factory default after the CPE restart.</p>