

Pronto Cloud Controller

Quick Start Guide

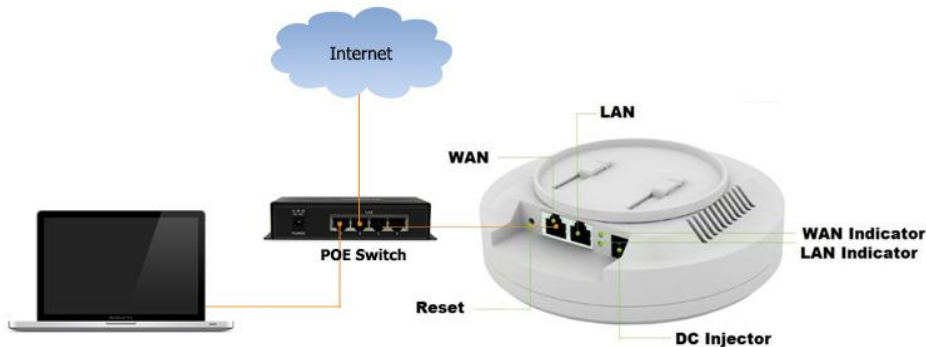
1. Package Contents

Unbox and verify the following contents:

- Pronto Point AP
- Auxiliary tool for installation
- 1 RJ45 Ethernet Cable

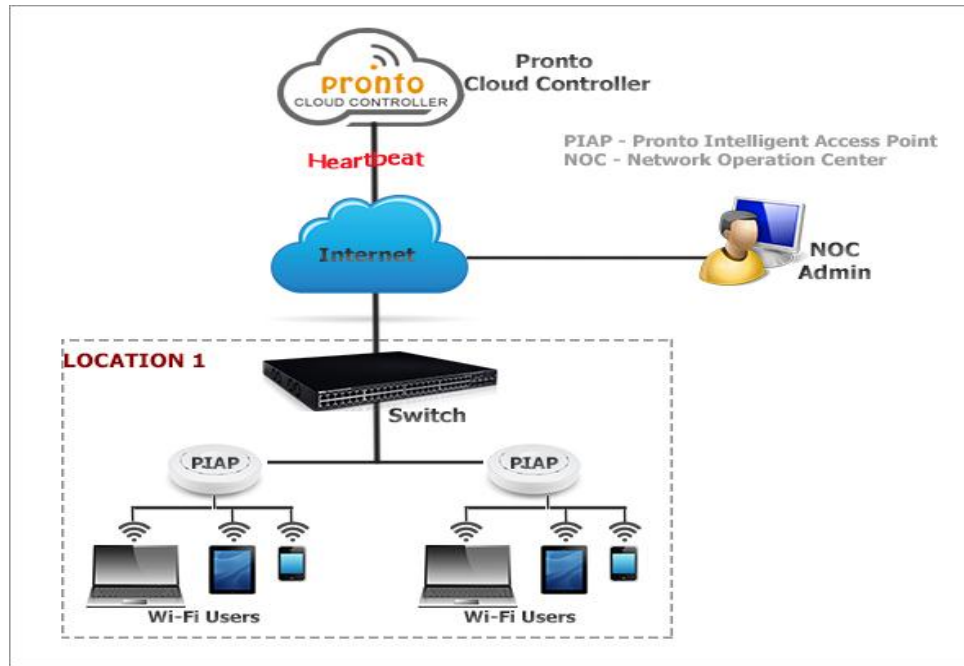
2. Hardware Installation

- Connect one end of Ethernet cable to POE switch port and the other end to Pronto Intelligent AP's WAN port and power on the AP
- Ensure that the Power LED is on (LED will glow in orange)
- Ensure that the Wireless LED is on (LED will glow in blue)



The Pronto Intelligent Access Points are configured and provisioned automatically against Pronto cloud controller with default configuration, as soon as they are connected to the internet. The default internet connectivity for these APs is DHCP. To change the default configuration and to enable monitoring on the AP, the administrator has to register and login to Pronto Cloud Controller.

3. Network Architecture



Network Architecture

4. Configuration

- Open a browser and type the following URL <http://cloud.prontonetworks.com>
- Pronto Cloud Controller welcome page appears and click on 'Sign up' to create an account.
- Provide data in the respective field to create a user account and click on 'Sign up'.
- On successful registration of user details, a confirmation instruction email will be sent to the given email address, (if the email isn't found in the Inbox, please check spam).
- Provide the user credentials and click on 'Sign in'.
- Upon successful login to the user account, the Pronto Cloud Controller Welcome page appears.
- Click on '**create a new network**' link on the welcome text or click on 'Select Network' drop down and select '**Create Network**'. Provide Network Name, Provide MAC address of access point under Device(s) and click on '**Create Network**' Button.

Create Network

Network Name

Walnut Network

Device(s)

00:E0:4C:68:09:7A

Add one or multiple devices to claim and assign to this network.

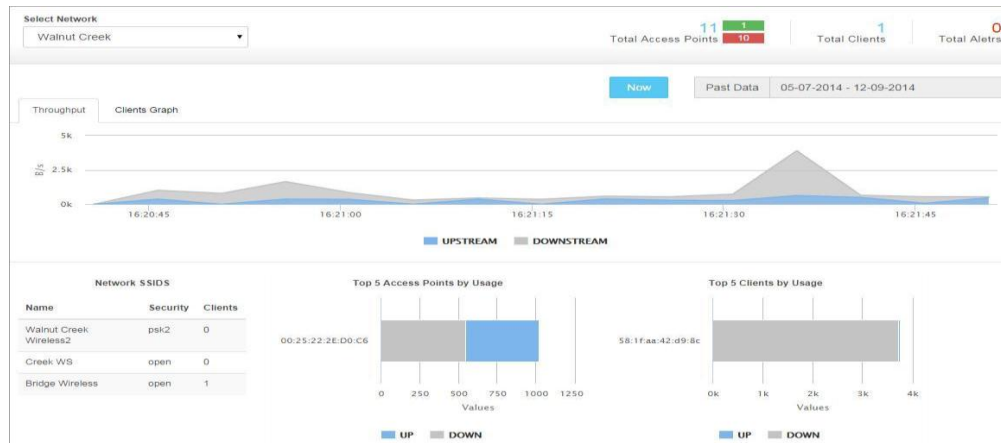
Create Network

- Bulk provisioning of access points is also available under the Inventories section.

- Upon successful creation of network, an SSID for the network will be generated automatically with the name of network with wireless word added to it. The automatically generated SSID will have a default configuration and can be edited by clicking on the SSID name. To create a New SSID, click on '**Add SSID**' button

Select Network Walnut Creek							
Network SSIDs							
Name	Enabled	Association	Mode	Hidden	Captive Portal Enabled	VLAN tag	Delete
Walnut Creek Wireless2	ON	psk2	Router	No	Disabled		Delete
Creek WS	ON	open	Router	No	Enabled		Delete
Bridge Wireless	ON	open	Bridge	No	Disabled		Delete

- You can start monitoring the access points from the Dashboard. It provides real time and historical graphical representation of Network throughput and throughput of connected clients in the respective network. The network can be switched using the 'Select Network' drop down.



Dashboard - Network Throughput

For further queries call: 408-837-7878 or mail to support@prontonetworks.com
or visit www.prontonetworks.com